

The Village Viewpoint



Magazine

Winter 2020

Picture description

2020 has been a dreadful year in many ways and one we are unlikely to forget. However I don't want to dwell on the negative side but rather remember 2020 for all the good things that happened during the pandemic. The amazing community spirit shown by so many residents who rallied to help their more vulnerable neighbours and friends, the volunteers delivering shopping or prescriptions, offering home made cake and food produce, doing online exercise or just calling someone for a chat. Our Covid-19 Community Champions awards were an opportunity to recognise all the brilliant work done by the many volunteers around the county and a small way to say THANK YOU to them. Find out more about the Community Champions inside.

Best wishes, Elaine O'Leary
Chief Executive Northamptonshire ACRE.

Content

NACRE's 75th birthday celebrations
Celebrating Northants Covid-19 Community Champions
Read about our Annual Review 2019-20
Results of our Rural Food Poverty survey
A rural food map of the county
The latest edition of the Community Transport directory
All the funding news
The RSN 'Revitalising Rural Campaign: Realising the Vision'
ACRE's response to the Planning White Paper consultation





Allied Westminster



Village Hall Insurance and the home of VillageGuard



© Allied Westminster (Insurance Services) Ltd

We don't just care for Village Halls, we care about Village Halls

CONTACT US FOR A QUOTATION

Tel: 01937 845245

Web: www.villageguard.com

Email: insurance@alliedwestminster.com

For details and terms of our FREE Property Valuation service, visit www.villagehallsurvey.com

Allied Westminster is the principal supporter of ACRE's advice service for Village Halls

VillageGuard is available exclusively from Allied Westminster (Insurance Services) Ltd
Authorised and regulated by the Financial Conduct Authority (FCA) - Registration Number 308386

The view from Northamptonshire

ACRE



Did you know....

Northamptonshire ACRE (NACRE) is an independent charitable organisation that supports and assist rural communities across the county on a wide range of topics, from developing a community shop, pub or transport scheme, assistance with community and neighbourhood plans, flood risk management, to wanting to know more about the best energy efficiency measures for your hall or how to obtain affordable housing. We are passionate about helping your rural community achieve a vibrant, sustainable future that includes everyone.

NACRE is dedicated to rural matters and we are in a unique position to provide bespoke support specifically tailored to meet the needs of our members such as Parish Councils and their residents. Our Community Facilities Advisor has been supporting village hall and community centre members for over 5 years, offering detailed knowledge and expertise especially around the governance and legislation issues that so many hall committees have to deal with.

We were designated as a Rural Community Council by the government many years ago and are one of 38 RCCs (one in each county) across England. Together, with our national body, ACRE, we form the ACRE Network. Like all the ACRE Network members, we work tirelessly to make sure the rural voice of England continues to be heard at a national and local level. So if there are issues that are vexing your community and which you would like us to highlight, please let us know. Our contact details are at the end of this magazine.

Celebrating our 75th anniversary!

Northamptonshire Rural Community Council was established on 26th July 1946, which means that next year we will be celebrating our 75th anniversary on 26th July 2021.

We changed our name to Northamptonshire ACRE in March 2000 but our aims continued to be the same - to support the rural communities of our county in order to help them become strong, thriving, inclusive places for everyone.

We are aiming to hold a series of workshops and events throughout our birthday week covering topics that relate to life in a rural community so if there is something specific you feel it would be helpful for us to cover, please let us know at acre@northantsacre.org.uk. We will be releasing more details in the new year.

Meanwhile, don't forget if your parish, community or group wants advice with any query relating to where you live, we are here to help! For more details email us at acre@northantsacre.org.uk or tel. 01604 795888.

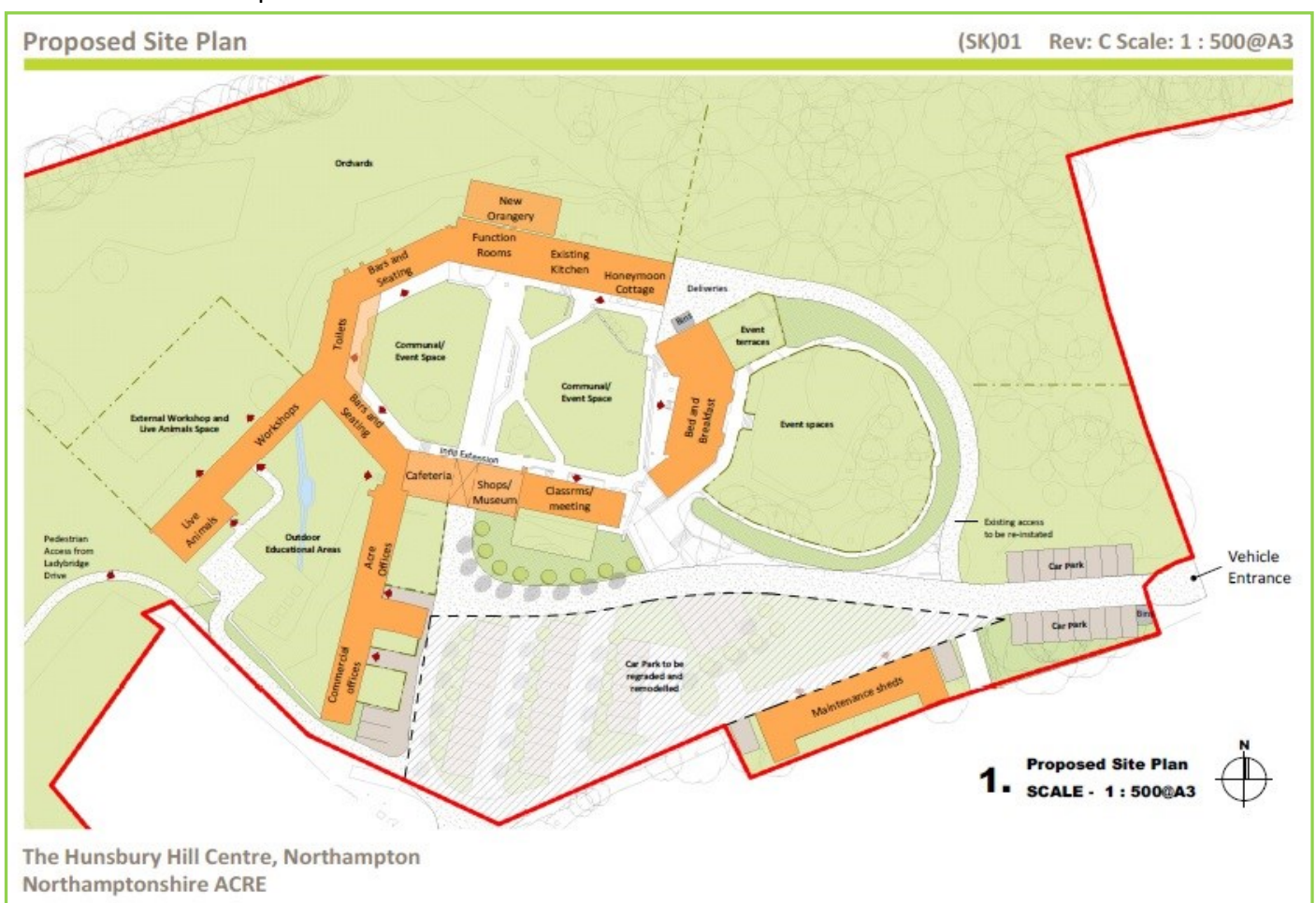
CELEBRATING
75
YEARS

26th July 2021

Bringing the Rural to the Town: Project update

In the last Village Viewpoint we gave an update on the project the charity has started to restore and renovate the Hunsbury Hill Centre. This project centres around the restoration and development of the Grade II listed farmhouse, outbuildings, hovels and the 13 acres of woodland, scrub and gardens. The overall aim of the project is to enhance the Hunsbury Hill Centre to make it a secure base for NACRE, a valuable resource for the local community, a beacon for the rural communities that NACRE serves and an improved venue for the wedding and conference business.

We have appointed GSS Architecture, Kettering to work with us in developing the site. GSS Architecture has recently worked on the renovation of Northampton Museum and the staff have specialist experience of architecture for the conservation of historic buildings. They have produced a draft site plan of how the site could be developed as shown below:



The aim is to renovate the 'hovels' (the long buildings near the car park) into NACRE's new offices, community meeting room, educational facilities and business workshops. A cafeteria, shop and museum will be housed in a new building opposite the existing High Barn and the farmhouse will be turned into guest bedrooms.

Bringing the Rural to the Town: Project update



Heritage Open Day 2020

Due to lockdown, we had to postpone our Heritage Open day, which would have given us the opportunity to explain the project to a wider community so instead we have developed an online YouTube presentation in its place. You can view the presentation at: <https://www.youtube.com/watch?v=0WrrAEGwnPo>.

We are also holding two online Q&A sessions on Wednesday 13th January 2021, at 10am and 4pm.

These sessions will be hosted by Richard Hollingum, Trustee of Northamptonshire ACRE. If you would like to take part, you can book a place via our Eventbrite page: <https://www.eventbrite.co.uk/e/the-hunsbury-hill-farm-past-present-future-tickets-129016254089>

We are currently waiting for the National Lottery Heritage Fund to re-open in February 2021 when we will be able to put in our Expression of Interest for funding for the development. If you would like more information about the project please go to : <https://www.northantsacre.org.uk/rural-town-0>

Could you be a Trustee or Director?

We are recruiting

We are looking for people who have a passion for life in rural communities and want to see them thrive. We are recruiting for the role of Trustee of the charity and are also keen to recruit directors for our trading arm, The Hunsbury Hill Centre Ltd.

If you are interested in finding out more, please contact Elaine O'Leary for a chat: email elaine.oleary@northantsacre.org.uk or tel. 01604 765888. You can also download an application form, see our website <https://www.northantsacre.org.uk/trustees-northamptonshire-acre>



If you are interested in being part of the Hunsbury Hill Farm project working group, we would love to hear from you. For more details about the available roles with the project, please contact Elaine O'Leary for a chat: elaine.oleary@northantsacre.org.uk or tel. 01604 765888.

Northamptonshire's COVID-19 Community Champions

A celebration of community with local people at its heart

Northamptonshire ACRE shines a light on the good work being done across the county during the coronavirus pandemic in 2020.

In our Summer magazine earlier this year, we mentioned that due to the coronavirus restrictions, we had postponed the 2020 Northamptonshire Village Awards. These awards are a fun way for groups to tell us what is so great about their village and why they enjoy living there and gives them an opportunity to win a Bronze, Silver or Gold award. However we wanted to find a way of showcasing all the amazing work that so many volunteers were doing during lockdown across the county to support those in need. Therefore we decided to launch **Northamptonshire's COVID-19 Community Champions**. Groups across the county were invited share details of the many ways they are supporting the more vulnerable in their community. We received 75 entries from various individuals, community groups and parishes with a huge amount of photos, videos, case stories and testimonials.



'Superman' Colin Wilkinson taking part in the **Team Harpole** fun run

At the moment we are busy putting together all the wonderful examples into a booklet that will celebrate these 'Community Champions'. The aim is to publish this book early in 2021. We are aiming to host a celebratory presentation evening at the Hunsbury Hill Centre (Covid restrictions in place!) in Spring 2021 where entrants will be presented with a Community Champions certificate and a copy of the booklet.

We wanted to share some of the activities the community groups in our county have been doing to support their community. As this awful virus continues, it may give you some ideas of how you and your village can reach out to those in need.

Two Harpole residents set up '**Team Harpole**' in March and recruited 58 volunteers. The volunteers put leaflets through every door in the village to explain the government restrictions and what support the elderly and vulnerable residents could obtain. One of the activities organised by volunteers included a fun run in which 150 residents took part and they raised £3,300 for Northampton General Hospital.

Yardley Hastings COVID support group received support from 142 volunteers who undertook tasks such as shopping, baking and collecting prescriptions. A virtual Open Gardens event was organised, involving 63 gardens with over 500 photos shared on Love Yardley Hastings Facebook page.

One of the Yardley Hastings virtual Open Gardens:





These pictures show Blisworth Postie Adam lifting the spirits of his community as he donned 12 different outfits in 12 weeks! **Blisworth Community Resilience Group** nominated their Postie Adam who helped his community during lockdown. The Royal Mail at Crow Lane started a food bank and Adam delivered food parcels for vulnerable residents in Blisworth. Residents of the village donated over £200 towards the food bank. Adam continues to spread good cheer and deliver support to those in need. When asked what his favourite outfit is, Adam replied He'man!



East Hunsbury Parish Council set up a number of initiatives to help those in their community. In April, resident Pauline Boler, asked for help to make items for Northampton General Hospital, the Mereway Ambulance Station Staff and the local Emergency Response Unit. The East Hunsbury Stitchers were born and 40 volunteers created over 3000 items. What a brilliant effort! Here we can see a young volunteer from the East Hunsbury Stitchers. A definite thumbs up from us.

Farthinghoe Parish Council nominated Holly Walters aged 17 from the village who ran 25K to raise money to support the new landlord and lady, Scott and Sarah, of the Fox Pub in the village. They took over the pub just before the pandemic and as such were not entitled to government support. Despite this they still made a significant contribution to supporting the village during the pandemic. Holly completed her run on 24 May and through a just giving page raised £1,305 for the couple to show the villagers' thanks for everything they did.

Here we can see Holly Walters handing her cheque to Scott and Sarah at the Fox Pub.

If you would like to see more of the stories, photos and amazing people who are our Covid-19 Community Champions, have a look at our social media sites. We are running regular items on our Facebook and Twitter page:

<https://www.facebook.com/northantsacre/> and <https://twitter.com/NorthantsACRE>





Spotlight on...

Woodford Halse Good Neighbours Scheme

A group of 70 volunteers in Woodford Halse have come together to support vulnerable residents of their village. With the help of NACRE they run a Good Neighbours Scheme. Here are some of the initiatives they have taken to support their community during the lockdown.

Allotment growers in the village donate fresh, homegrown vegetables to add to the weekly food boxes we do for families.



At Easter time Canons Ashby House donated 300 Chocolate Easter Eggs to the WHGNS scheme to be shared out to all the families of Woodford Halse Academy, plus 150 chocolate eggs for the children of Orchard Day Nursery. The children were delighted to receive their Easter eggs.

Every week since April volunteers prepared food boxes to support 16 vulnerable families who attend Woodford Halse Academy and Orchard Day Nursery. These boxes included food donations from SOFEA and local residents and was supplemented with food purchased by WHGNS using grant funding to add 2 lots of vegetables, 2 lots of meat and 2 lots of fruit to each box.

They planted up a half acre allotment with vegetables and fruit to give out to families in need in the village.



Like so many of our other Good Neighbour Schemes, the volunteers of Woodford Halse were amazing and very innovative. If you are thinking about setting up a Good Neighbours Scheme, or would like more details as to how they can help, please get in touch with Jennifer Hedges. Email jennifer.hedges@northantsacre.org.uk or tel. 01604 765888.



Northamptonshire
ACRE is

SUPPORTING RURAL COMMUNITIES

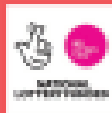
Northamptonshire ACRE can help you **support your community** to set up a Good Neighbourhood Scheme as part of our National Lottery project.

What is a Good Neighbours Scheme?

A Good Neighbours Scheme is established by communities and run by local residents to provide support to their neighbours who may need help on a regular or occasional basis.

By registering the schemes will get:

- Free support, advice and resources
- Training
- Up to £700 of grant funding (East Northants, Kettering, Corby and Wellingborough)
- Become part of a larger network of groups with a new forum
- Regular networking meetings



CONTACT US



Hunsbury Hill Centre,
Hunsbury Hill,
Northampton
NN4 9QJ



Jennifer.hodges@northantsacre.org.uk



01604 825884



www.northantsacre.org.uk

Our Annual Review 2019 - 2020

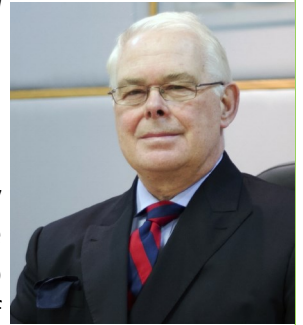
We have produced a review of our work during 2019-20. This is the introduction from our Chair of Trustees, Gareth Lugar-Mawson.

It goes without saying that 2020 has been an unusual and difficult year, and I'm delighted to say that all at NACRE have risen to the many challenges it presented.

The Good Neighbour Scheme helped around 7,512 individuals and we were very fortunate to have received very generous funding of over £272,000 from the National Lottery to continue with it for the next 3 years. We were also fortunate to have received Government funding of £40,000 to continue with our core work of helping the rural communities in Northamptonshire.

I was impressed at the public spirit shown by many in Northamptonshire during the 2 lockdowns. Food poverty was a great concern in both of them, and there were many magnificent and imaginative schemes, both large and small, run by dedicated volunteers to help those affected by it during those 2 periods. My heartfelt thanks to all who helped.

Our Village Hall support service really blossomed this year with 24 new Halls joining the scheme, bringing the total to over 130 members. If your Village Hall has not already joined, may I urge you to do so? At £40 a year it's a bargain.



The Hunsbury Hill Centre renovation project is well underway and we hope to have the grounds and woodlands open for allotments and a Community Orchard in 2021. My thanks to the Working Party overseeing this exciting project.

I would like to thank everyone of our dedicated and enthusiastic staff for all they did throughout the year, which was well over and above the call of duty.

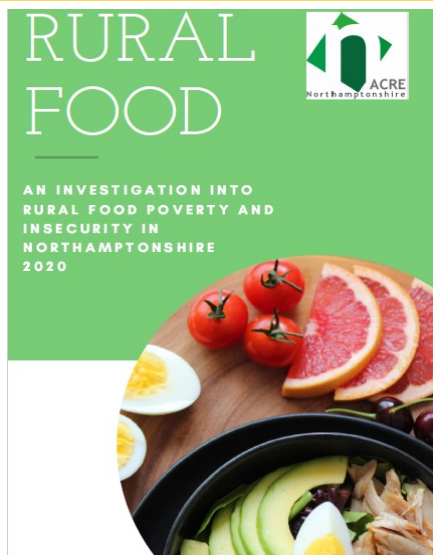
My thanks also to my fellow trustees for their strong commitment to, and support of, NACRE's work in the County. We are always looking for new members of our Board of Trustees. If you think that you could help with our work by becoming a trustee, please contact Elaine O'Leary, our Chief Executive, or myself. Our contact details are at the end of this Review.

We hope that 2021 will be a far better one for everyone. When we come to review 2020, we will see the terrible scars of a global pandemic, but we will also see the value of selflessness, genuine charity, and the importance and strength of local communities.

I assure you that NACRE will always be there to help all of the communities in Northamptonshire.

Our Annual Review 2019—2020 is available to download at: <https://www.northantsacre.org.uk/nacre-minutes-reports>.

Rural Food Poverty survey



In Autumn 2020 Northamptonshire ACRE carried out a survey to investigate food insecurity and poverty in rural Northamptonshire.

♦ **Rural food poverty** is defined as: the inability to obtain sufficient healthy affordable food.

♦ **Rural food insecurity** is defined as: not having reliable access to a sufficient quantity of affordable, nutritious food.

Increasingly rural communities in Northamptonshire are reporting food insecurity and poverty. Working with key partners we sought to investigate and establish the key causes of rural food poverty in the county.

As well as investigating poverty and insecurity we sought to understand how living in a rural location impacted on diet and shopping habits. We were particularly interested in how many respondents shopped locally.

The aim of this report is to help inform decision makers of the difficulties that are faced in rural communities. These issues have been exacerbated by the COVID-19 pandemic and we are concerned that many people are falling through the cracks, unable to access or are unaware of the support that is more readily accessible to urban communities. Having access to reliable, affordable nutritious food is important not just for physical wellbeing, but mental wellbeing too.

Causes of food poverty:

Although 40% of respondents mentioned financial hardship as the cause of their food poverty, Figure 1 shows there are other factors that contribute to this including infrequent or non-existent bus networks, poor rural broadband, a lack of confidence for online use and villages without a local shop stocking a good range of nutritious food at affordable prices. There were clear indications that food poverty was exacerbated by a lack of rural services.

Our survey also found:

- ♦ Older people were more likely to comment that financially they could afford food, but were unable to get to a shop due to a lack of transport
- ♦ People with school aged children living at home were more likely to state financial hardship and cost of food contributed to poverty in their community.
- ♦ 58% of respondents did not know where they could get help if they found themselves in food poverty.
- ♦ 25% of respondents worried about the cost of food
- ♦ 45% said that food was more expensive because of their rural location.

The full report can be viewed at <https://www.northantsacre.org.uk/rural-food>

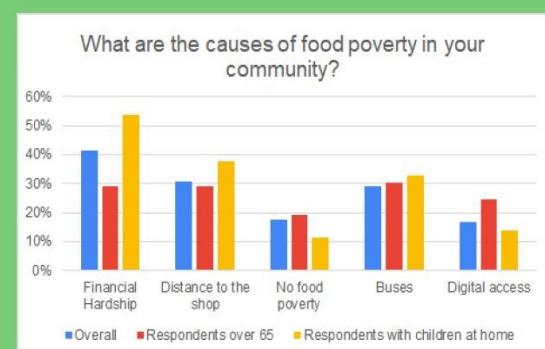






FIGURE 1.

People with children were more likely to report financial hardship as the cause of food insecurity in their community whereas in over 65s were more likely to cite digital access or say there was no insecurity.

Rural food map of Northamptonshire

We are interested in building up a rural food network and as part of this process we have created a rural food map on our website. The aim of this map is to promote all the wonderful rural food businesses across the county and to encourage people to shop locally.

The coloured pins represent the following:

-  Village stores and shops
-  Pub bars and restaurants
-  Breweries
-  Farm shops and cafes.
-  Butchers



We will add food banks, larders and community fridges shortly plus we will continue to add other businesses as we become aware of them. If you know of a shop or food business that you would like to include on the map, please send the details to Jennifer.Hedges@northantsacre.org.uk

The map can be accessed at <https://www.northantsacre.org.uk/rural-food>

Community Transport directory 2021



NORTHAMPTONSHIRE COMMUNITY TRANSPORT DIRECTORY 2021

Phone: 01604 765888
Email: acre@northantsacre.org.uk
Web: www.northantsacre.org.uk



Jenni, our Rural Officer, has been busy updating our Community Transport Directory and the new 2021 version is now available for any community group, village or individual to download for free from our website: <https://www.northantsacre.org.uk/new-community-transport-directory-now-available>.

The directory gives information on all the current known community transport schemes across the county and identifies the villages each one serves.

If your community scheme is not included, please contact Jenni to get the details in the next edition. You can also contact Jennifer Hedges on jennifer.hedges@northantsacre.org.uk for a copy of the directory.



Spotlight on...

CommMinibus Community Transport

Northamptonshire ACRE supports a number of Community Transport schemes. This month the spotlight is on CommMinibus, a social enterprise providing bus service to reduce rural isolation and loneliness, as well as to provide communities an alternative to cars.

CommMinibus is pleased to announce that a trial of the “Kettering Catcher” scheme is being carried out in Mawsley, offering a weekly trip from Mawsley to Kettering town. The service is well used and they’ve

managed to achieve an occupancy rate of 87.5%. Following the success of the first trial, they’re moving onto phase two of the trial and are able to serve villages along the A43 corridor (which is served by Stagecoach bus number 10 during peak hours).

Although this is still a very challenging time and many elderly people may still be shielding, they have taken all available steps to ensure the safety and wellbeing of service users. Those who joined previous services have benefited from a more active lifestyle, which is a key to combat loneliness and its associated mental health problems.

Their vehicle is not yet fully utilised at the moment, meaning that they’re able to introduce the service to other communities within the service area (See map on their website.)

Please spread the word to those who you think will benefit from this service.

For more information on the service see

**<http://www.cmbus.org> or
phone 07888 011 891**



Sharing is caring...
Catch our bus and get out and about in style!

KETTERING CATCHER
Share your ride with us - our scheme is for everyone!

- Pre-booked bus service for commuters and students
- Pre-booked trips for groups, businesses and organisations
- Weekly off-peak shoppers' trips for rural communities
- Bus hire for special occasions or trips

Free off-peak concessionary travel within this area:



- ✓ Enhanced cleaning for COVID (see our website)
- ✓ Free travel for bus pass holders
- ✓ Reduced social isolation
- ✓ Active lifestyle
- ✓ Reduce carbon footprint & congestion
- ✓ Bring users to your business or organisation



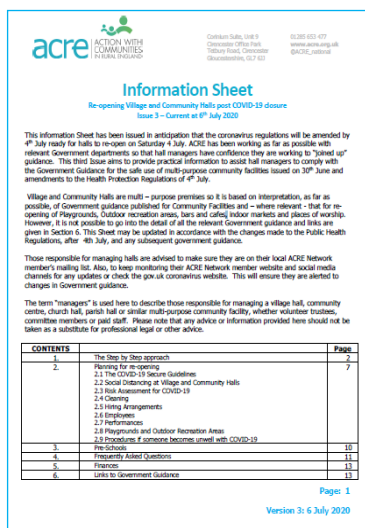
CMB hotline: 07888 011 891   [cmbus.org](http://www.cmbus.org) info@cmbus.org

 **CommMiniBus**  community transport association  **social enterprise**

NACRE News : Village Halls



ACRE village hall Covid-19 updates



It has not been an easy year for community building groups. With constant changes as to whether halls can open or not, it has been an especially difficult time. And in many ways, the re-opening process has required far greater planning than the relatively straight forward process of closing.

Thankfully our Community Facilities Advisor has had excellent information from national ACRE with a steady stream of invaluable information sheets to update our members about the latest guidance.

The latest detailed Information Sheet about re-opening village halls and community centres was issued at the end of September 2020 with further updates as the situation changed and we moved into tiers.

The latest information about the tiers and what the local restrictions is at:

<https://www.gov.uk/guidance/local-restriction-tiers-what-you-need-to-know>.

Covid-19 Safer Spaces—Free Guide

The Covid-19 Safer Spaces project has been developed by architects IF_DO to help public places to reopen safely.

This project is funded by Innovate UK and the series of easy-to-use guides will help anyone who works in public places to understand how they can adapt them to enable their safe reopening and operation.

You can download the guide for Community Centres by using this link: <https://covid19saferespaces.org/>



Promoting good safeguarding practice:

If you are a Community Facilities member, please check your December newsletter from Frances for more details about the National Lottery funded project to promote good safeguarding practice in village and community halls across England. There are links to resources and an update on forthcoming training.



If your hall is not yet a member and you would like to find out more about the service we offer, please contact Frances Harris: frances.harris@northantsacre.org.uk or tel. 01604 765888. By joining us you will become part of a large community of halls across the ACRE Network and able to access all their shared knowledge and expertise.

Future Training and Events



Forthcoming Events in 2021

Event	Details	Date
Good Neighbours network meeting	This is one of our regular networking events for existing Good Neighbour groups and anyone who would like to know more about becoming a scheme. For more details contact Jennifer.Hedges@northantsacre.org.uk	Wednesday 6th January 2021. 1pm to 2pm
The Farm Project Q&A	An opportunity to find out more about the Hunsbury Hill Farm project with Richard Hollingum, Trustee	13th January 2021. 2 online sessions at 10am and 4pm
Village Halls week beginning Monday 25th January 2021	Annual event. Members can join Frances Harris, Community Facilities Advisor for a virtual coffee morning. Bring your own tea and cake!	Wednesday 27th January 2021 at 10am
Online safeguarding training	A useful training session for village halls and parish councils around safeguarding of children and vulnerable adults. This will be run by Jenni Hedges, Rural Officer.	Date TBC
Parish Councillor network evening	The main topic will be around rural food access and poverty. This is free to NACRE members.	Tuesday 23rd February 2020, 4.30pm to 6.30pm
Covid Community Champions evening	An evening celebrating our Covid-19 champions at the Hunsbury Hill Centre	Wednesday 12th May 2021
Parish Councillor network session	The main topic will continue the community resilience theme and greening your village	Date to be confirmed in early July.
Community Festival and 75th Birthday celebration	Stalls, events, music and food festival open to everyone as part of the Hunsbury Hill Farm project.	Sunday 18th July 2021, 11am to 3pm
Northants ACRE 75th anniversary	Celebrating the work the charity has been doing over the last 75 years.	Monday 26th July 2021
We also intend to hold further safeguarding training for village hall committees, online energy training for community groups and additional Trustees Roles and Responsibilities training during the year. Look out for more details in early 2021.		



Spotlight on...

Supporting Independence

Supporting Independence Programme

Are you aged 18 or over?

Have you noticed any recent changes in your health?

Do you have difficulty walking or need help moving about?

Are every day tasks becoming difficult?

Do you need someone to help you on a regular basis?

Do you sometimes feel lonely or isolated?



If you have answered "yes" to any of the questions above, we may be able to help.

Call us on **0300 126 1000** from 8am-6pm Mon-Fri

Or complete an online form at:

www.northamptonshire.gov.uk/sip

Funding News



Daventry District community grants

£1,000 climate action grants available

Community groups in Daventry District are being offered grants of up to £1,000 to help fund environmental projects as part of an initiative to tackle climate change. <https://www.daventrydc.gov.uk/your-council/news/1000-climate-action-grants-available-29-10-20/>

The Action on Climate Change grants can be used to fund a range of projects, such as tree or wildflower planting, reuse or recycling schemes, litter-picking initiatives and much more.

The funding has been made available by Daventry District Council (DDC) as part of its **Action on Climate Change campaign**, launched earlier this year following the authority's decision to declare a climate emergency. Councillor Jo Gilford, Environment Portfolio Holder on Daventry District Council, said: "The grants can be used for a range of projects that seek to improve the environment or reduce the impacts of climate change. Whether it's to launch a new group or initiative, or to support an existing one - we're really keen to hear your ideas and support them if we can."

DDC declared a climate emergency in February this year, agreeing 20 environmental aims and improvements to tackle it. They include a new tree policy, which aims to double tree cover across the District over the next ten years and the Action on Climate Change campaign, which shows people how they can make simple changes to reduce their carbon footprint.

To request an application form for an Action on Climate Change grant, please email communitygrants.ddc@daventrydc.gov.uk. For more information about the scheme please phone the Community Projects Team on 01327 871100.



Daventry District Lotto

The Council has entered into partnership with lottery organisers Gatherwell for the Local Lotto, a weekly online lottery with a £25,000 jackpot. Everyone who buys a £1 ticket can choose for 40p of the money to go to a good cause of their choice. Another 10p goes into the Council's community pot for redistribution to good causes in Daventry District.

Voluntary and community groups can use the Local Lotto to help raise funds for their organisation by signing up for free on the [Local Lotto site](https://www.daventrydc.gov.uk/living/community-grants/local-lotto/). Groups which sign up receive a free page on the website to help them promote their cause, as well as marketing materials to help them drive ticket sales within their organisation. More details at: <https://www.daventrydc.gov.uk/living/community-grants/local-lotto/>



Good Neighbour scheme funding

DDC has grants of up to £1,000 available for groups wishing to set up Good Neighbour schemes in the district. For more information contact Emma Parry, Community Projects Officer, on 01327 871100 or email eparry@daventrydc.gov.uk. To download an application form for funding go to <https://www.daventrydc.gov.uk/living/community-grants/>

Funding News cont...



National Lottery Funding in England—OPEN AGAIN!



On 2 December 2020, the National Lottery announced that the National Lottery Awards for All and Reaching Communities funding programmes in England are **open again**.

This follows their decision earlier in the year to provide only emergency funding to projects supporting communities through the pandemic.

<https://www.tnlcommunityfund.org.uk/news/press-releases/2020-12-02/our-national-lottery-funding-in-england-update>

Northampton Borough Council—Small Grants Fund

Northampton Borough Council's Small Grants Fund is available for voluntary and community organisations working within Northampton, which have charitable objectives.

The fund will consider a wide range of projects including:

- Community events and activities
- Small scale training costs.
- Small or large pieces of equipment

The next deadline is 15 January 2021

For further information see <https://www.northampton.gov.uk/downloads/200260/community-funding>



Calor Rural Community Fund



Rural communities off the mains gas grid are eligible to apply for funding for their projects. Calor publishes accepted applications on the website and the public are invited to vote. Projects with the highest votes go before a judging panel for selection.

The fund is currently closed but reopens for applications in 2021 and you can register your details now at the site below.

Calor says: "From community centres and village halls, to beach wheelchairs and defibrillators, Calor's Rural Community Fund has met the needs of hundreds of people from all across the UK."

<https://communityfund.calor.co.uk/>

Funding News cont...



Gigabit Broadband Voucher Scheme

This scheme is administered by the Department for Digital, Culture, Media & Sport and is part of the Government's commitment to a vision of a digitally connected Britain.

Gigabit-capable broadband connections offer the fastest and most reliable speeds available and homes and businesses in rural areas of the UK may be eligible for funding towards the cost of installing gigabit-capable broadband when part of a group scheme.

Rural premises with broadband speeds of less than 100Mbps can use vouchers worth £1,500 per home and up to £3,500 for each small to medium-sized business (SME) to support the cost of installing new fast and reliable connections.

Find out if you are eligible for a rural voucher by entering your postcode at the DCMS website <https://gigabitvoucher.culture.gov.uk/>

The Return to Play: Community Asset Fund



This Sport England fund is for new applications focused solely on helping support clubs and community groups through the ongoing coronavirus (Covid-19) pandemic to return to play.

It's designed to provide capital funding to help local sports clubs and organisations to adapt and open important places and spaces so people within their community can return to play and physical activity, safely. The focus is on responding to the immediate challenges of sports and physical activity returning to play this autumn.

There are some important changes to how this funding will operate, compared to how the pre-coronavirus Community Asset Fund operated. These are:

- Your project must be about addressing the challenges you're now facing because of coronavirus and linked to a return to play. At this time, they are not funding general capital works. The minimum level of funding available is £10,001
- The maximum level of funding available is £50,000 - this is to ensure Sport England can fund more clubs and groups.

More details at: <https://www.sportengland.org/how-we-can-help/our-funds/return-play-community-asset-fund>

Return to Play: Small Grants

If your project is for less than £10,000 then please refer to the Return to Play: Small Grants fund: <https://www.sportengland.org/how-we-can-help/our-funds/return-play-small-grants>. This £10 million fund focusses on providing awards between £300 to £10k to support clubs and community groups who are responding to the challenges of returning to play during the coronavirus pandemic.

They have relaxed the timeframe for when the activity must be up and running and are taking a more broader and flexible approach to the type of projects they will support.

Funding News cont...



Carbon emissions reduction fund

This new £1 million fund launched by Ofgem Energy Industry Voluntary Redress Scheme is offering grants of between £50,000 and £100,000 to charity initiatives that reduce the climate change impact associated with energy use in England, Scotland and Wales. Projects must meet the following criteria:

- Demonstrate measurable and lasting reductions in the carbon intensity of energy end use and accelerate the transition to net zero carbon
- Show a realistic prospect of delivering broadly replicable benefits to existing and/or future energy consumers
- Proved to be efficiently managed throughout the project.

The fund is managed and delivered by Energy Saving Trust and consists of voluntary payments collected by the Energy Redress Scheme from energy companies that may have breached rules and to compensate the effects on energy consumers that may have been affected. Charities should register by 14 January 2021 and the application deadline for the first round is 5pm 11 February 2021. <https://www.energyredress.org.uk/announcements/new-carbon-emissions-reduction-fund-available>

More than a Pub programme – Plunkett Foundation



The More than a Pub programme provides business development support to enable the community control of pubs in both rural and urban communities across England.

Combined finance packages of up to £100,000 are available (£50,000 loan and £50,000 grant) to help community groups secure control of their local pub.

<http://plunkett.co.uk/more-than-a-pub/>

Winter Grant Scheme for vulnerable households

The £170 million COVID Winter Grant Scheme will be made available in early December 2020 to support those most in need across England with the cost of food, energy (heating, cooking, lighting), water bills (including sewerage) and other essentials. This will be distributed via local authorities, who are encouraged to provide support to a broad cross section of vulnerable households in their area. It will cover the period to the end of March 2021. £16m will be available to fund local charities through well-established networks and provide immediate support to front-line food aid charities.

<https://www.gov.uk/government/news/new-winter-package-to-provide-further-support-for-children-and-families>



Spotlight on...

Northampton Partnership Homes



NORTHAMPTON
PARTNERSHIP HOMES

Northampton Partnership Homes (NPH) is an arms-length management organisation (ALMO) that manages Northampton Borough Council's (NBC) housing services. The company is owned by NBC but has its own management team and board of directors and as a not for profit organisation, any income received is put back into providing housing and housing related services.



NPH has recently been celebrating the completion of 21 brand-new homes in Collingtree. The 2- and 3-bedroom homes are modern, spacious and have large gardens that are perfect for families. The project was a partnership effort between NBC, NPH and

their contractor Jeakins Weir, who worked hard to complete the development in challenging circumstances this year.

Shakil Ahmed is in the process of moving in to one of the houses and is thrilled with his new home in Collingtree: *"I had a moment when I first walked into my new home where I was overwhelmed. To get something like this is amazing and moving in has come just at the right moment, before Christmas. We love the area, and we have lots of space and a large garden – my family really couldn't ask for more. We'll be here for many years to come."*

NPH and NBC are committed to building more homes across Northampton. Councillor Jonathan Nunn, Leader of Northampton Borough Council, said:

"These homes have been built as a part of NBC and NPH's ambitious housing programme, where we've committed to building over 1000 new over the next ten years – a target we expect to significantly exceed. We believe that residents deserve high quality, modern homes and this development really delivers on that. The new homes in Toms Close are really positive for the local community, and for Northampton as a whole. We'd like to thank our contractors and everyone at NPH for this fabulous result."

Take a look at the "virtual opening" on their site: www.nph.org.uk

Local and National News



Revitalising Rural Campaign: Realising the Vision

Revitalising Rural: Realising the Vision is a campaign led by the Rural Services Network to challenge Government on a number of policy areas that affect rural communities. RSN has developed draft documents on a number of topics that reflect the needs of rural areas from sustaining village schools, digital connectivity and accessible health & care services to affordable housing, land use planning system and Parish Councils and community action. There are also a number of asks for Government.

You can view the draft documents and individual chapters on their website: <https://rsnonline.org.uk/revitalising-rural>



Sparse Rural: Campaign for fair funding

Sparse Rural, which is a grouping within RSN, represents rural local authorities. Its members include Daventry District Council, East Northants District Council and South Northants Council. One of the integral parts of the Revitalising Rural Campaign is a call for fair funding for rural areas. Sparse Rural is part of the campaigning for fairer funding. Did you know:

- Rural residents pay, on average, 20.17% (£91) per head more in Council Tax than their urban counterparts
- Rural residents pay more, receive fewer services and, on average, earn less than those in urban areas

According to Sparse Rural:

It costs more to deliver services in rural areas...the way that the Local Government Finance Settlement has been calculated has resulted in rural areas being significantly underfunded when compared to urban areas...



Working alongside the [Rural Fair Share Campaign](https://www.sparse.gov.uk/fairer-funding/) grouping of MPs, we are asking for a fairer distribution of the funds, so that historical imbalances where rural areas are penalised, do not continue. <http://www.sparse.gov.uk/fairer-funding/>

RSN urges rural authorities to respond to consultation

The Government announced the **Provisional Local Government Finance Settlement** on 17th December 2020, which sets out the funding that Local Authorities will receive for the period 2021-2022.

The Rural Services Network is concerned that once again, rural councils (and the communities they serve) are not receiving a fair share of resources being made available by the Government to support local authority services.

News cont...



RSN urges rural authorities to respond to consultation

According to the RSN, Rural residents will find themselves in comparison with their urban counterparts:

Overcharged – through paying more in council tax

Short-changed – through the flawed, urban biased funding formula/distributional methodology

And according to the provisional settlement:

Rural Residents will pay on average over £96 more per head in council tax than urban residents.

Receive £107 (61%) less per head from Settlement Funding Assessment than urban residents

The RSN has prepared a draft response to the consultation and will circulate it to the Local Authorities who are in the Sparse membership this week but would urge all rural local authorities to respond to the consultation so that their views can be considered and heard in MHCLG.

In particular they are asking for responses to Section 6 on the Rural Services Delivery Grant, and to answer yes to question 7 on this particular grant.

Question 7: Do you agree with the Government's proposals for Rural Services Delivery Grant in 2021-22?

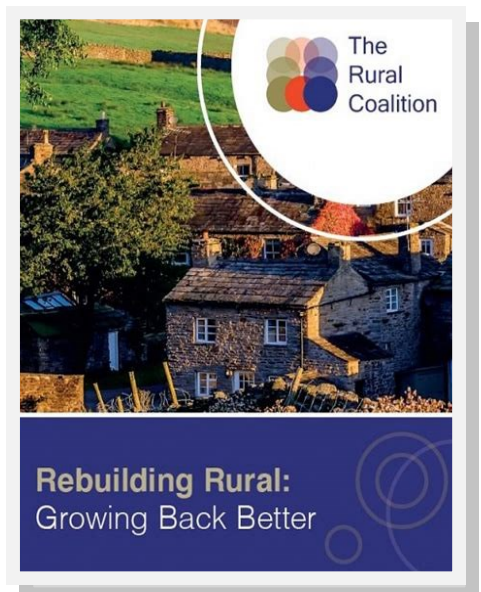
The consultation is available at: <https://www.gov.uk/government/consultations/provisional-local-government-finance-settlement-2021-to-2022-consultation> and runs until 16th January 2021.

Rebuilding Rural: Growing Back Better

This document has been produced by a coalition of 13 leading rural organisations, including ACRE, RSN, CPRE and National Association of Local Councils. It urges the Government to commit to more equitable funding in rural areas to support England's economic recovery from COVID-19.

The Rural Coalition is calling for the Government to set out its vision for rural England providing:

- ♦ Opportunity for all in rural England – Levelling-up access to good quality jobs, homes, education and health services in rural areas with fair funding for public services
- ♦ A more resilient rural economy – More investment in skills, retraining and digital infrastructure, to attract new businesses to the area and increase economic diversity
- ♦ A major contribution to becoming net zero – Capitalising on opportunities for green rural growth, whilst helping to deliver the nation's net zero emissions target



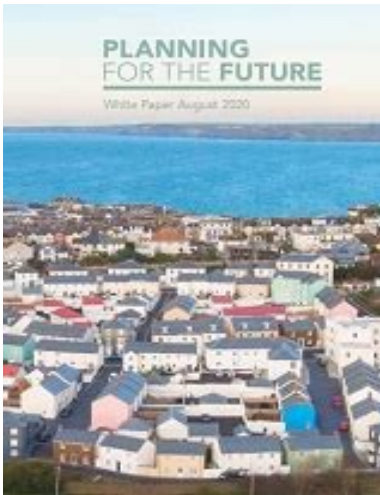
The full *Rebuilding Rural: Growing Back Better* document from the Rural Coalition is available here:

<https://acre.org.uk/cms/resources/rural-coalition-rebuilding-rural-final-digital-version.pdf>

News cont...



ACRE response to Planning for the Future White Paper



As you will know the Government introduced a Planning White Paper in August 2020. The consultation proposed reforms of the planning system to streamline and modernise the planning process, bring a new focus to design and sustainability, improve the system of developer contributions to infrastructure, and ensure more land is available for development where it is needed. The consultation was out until 29th October 2020 and the responses are currently being reviewed.

However the proposals have caused widespread dismay among many groups including housing charities, planning officers and architects who warned of a new generation of fast and substandard housing while the Town and County Planning Association condemned the proposals as disruptive and rushed.

As the leading national charity representing rural community interests, the ACRE members have a keen interest in the government's proposals to radically reform the planning system. National ACRE consulted with all 38 members of the Network and from what came back, has produced a formal response to the White Paper. Our conclusion was that the reforms will have a detrimental impact on many rural communities. In our formal response to government, we drew attention to four particular concerns the Network had:

1. Zoning will undermine rural communities ability to thrive—it was felt the zoning proposals were too crude to be fully responsive
2. Rural residents will lack a voice in Local Plans or planning applications—there is a contradiction between the warm words in the White Paper about increased community engagement and the reality with the new proposals excluding residents from planning decisions on individual developments
3. Neighbourhood Plans will be reduced in importance—the White Paper seems to diminish these important tools to merely being Design Guides.
4. Delivery of new affordable housing will be curtailed

As a general observation, we also note the Planning White Paper lacks detail with respect to many proposals which suggests there is a long way to go.

You can read the ACRE Network's formal response at: <https://acre.org.uk/news/2020-11-06-acres-response-to-the-planning-white-paper>

Welcome to the new Unitary Chief Executives

Northamptonshire ACRE welcomes the appointments of the new Chief Executives for the two Unitary Authorities:

- ♦ Anna Earnshaw, the Chief Executive of the West Northamptonshire Council
- ♦ Rob Bridge, the Chief Executive of North Northamptonshire Council.

We wish them well in their new roles and look forward to working with them and the new Unitary Authorities for the benefit of our rural communities in the county.

Charity Commission Updates



Charity Commission Covid-19 Guidance for the Charity Sector

The Charity Commission updated its Covid-19 Guidance for the Charity Sector on 6 November. It provides advice and guidance for charities on a range of matters including:

- Cancelling or postponing AGMs
- Holding meetings online or by telephone
- Using reserves and restricted funds

<https://www.gov.uk/guidance/coronavirus-covid-19-guidance-for-the-charity-sector#history>

Guidance

Coronavirus (COVID-19) guidance for the charity sector

Guidance to help with running your charity during the coronavirus (COVID-19) outbreak.

Published 7 April 2020

Last updated 29 September 2020 — [see all updates](#)

From: [The Charity Commission](#)

Charity Governance, finance & resilience: 15 questions trustees should ask

The Charity Commission recognises that many charities are currently very concerned about their financial position and the above guidance does give detailed information about using reserves and restricted funds.

In the first instance, trustees should consider what are their short, medium and longer term priorities, and see if they need to amend their financial planning given their current situation. Trustees are encouraged in particular to think about whether or not certain projects, spends or activities can be stopped or delayed in order to focus on essential spending if they are facing financial challenges at this time. If needs be seek professional advice to help.

The Commission has additional guidance with 15 questions to help charity trustees carry out a review and decide what they need to focus on. The questions include links to other guidance where relevant, which will help trustees access information on a particular issue.

<https://www.gov.uk/government/publications/charity-trustee-meetings-15-questions-you-should-ask/charity-trustee-meetings-15-questions-you-should-ask>

Charity Commission News: Issue 65

Charity Commission News: Issue 65

CC News provides essential regulatory information for charity trustees and their advisers.

Published 5 November 2020

From: [The Charity Commission](#)

This edition includes information about the Charity Commission's new-look Register of Charities, designed to display charity information more clearly.

<https://www.gov.uk/government/publications/charity-commission-news-issue-65/charity-commission-news-issue-65#new-register-of-charities>

Advertising Rates



VILLAGE VIEWPOINT MAGAZINE

ADVERTISING RATES

Northamptonshire ACRE welcomes adverts from community groups, councils and local companies. All adverts must be provided as print ready copy and photos should be a minimum of 300dpi. Adverts can be in colour or black and white. Adverts must be emailed to the editor in the correct size required.

Prices from 1st January 2021

The prices are as follows:

	<u>Price per single issue (includes VAT)</u>	
<u>A5 Format</u>	<u>Internal Pages</u>	<u>Back Cover Advert</u>
Full page (145mm x 210mm)	£60	£85
Half page (145mm x 105mm)	£35	n/a

Additional issues:

There is a **10% DISCOUNT** on adverts in 2 consecutive issues. **15% DISCOUNT** on adverts in 3 or more consecutive issues.

Community groups:

Please Note: If you are a community (not for profit) group wishing to advertise in the magazine, there is a discount on the prices shown. Please contact acre@northantsacre.org.uk for more details.

Submission Deadlines:

Issue	Summer	Winter
Submission Deadline	20th April	20th August
ACRE Mailing Deadline	June	December

Booking an advertising space:

For more details or to receive a booking form, please contact acre@northantsacre.org.uk

The Barns at Hunsbury Hill



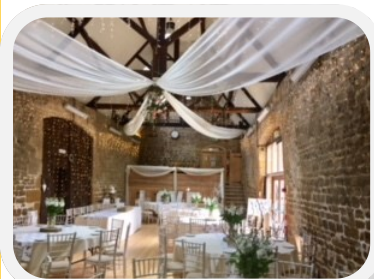
Did you know....

The Barns at Hunsbury Hill...

Is the trading name for the Hunsbury Hill Centre Ltd, which is the trading arm of Northamptonshire ACRE. Our trading arm runs events at the centre such as weddings, corporate and social meetings and wakes.

This enabled us to bring any surplus funding generated from the trading arm back into the charity and this is used to support our work with our members across the county.

We know we are lucky to be able to work in such a lovely environment as the Hunsbury Hill Centre and it is certainly a popular place to get married.



Our Events Co-Ordinator, Sarah Clarke, did a great job in 2019 in encouraging couples to book at our venue and we had over 80 weddings held at The Barns that year. We had nearly 60 booked for 2020 but sadly we were unable to hold any weddings due to the pandemic. Most of the couples who had booked a wedding for 2020 have moved it to later in 2021 or even 2022.

We are able to offer a range of venue prices depending upon the day chosen, all catering is carried out by Impressions Caterers Ltd who also provide all the bar and waiting staff along with an Event Manager for the day. And our High Barn can be dressed to suit your requirement and taste.



If you know of anyone looking for a romantic, rustic venue to hold their wedding, where they will receive great service, have wonderful views over South Northants and delicious food to enjoy, why not give them the details of The Barns?

If you would like to know more about having a wedding at The Barns, please check our website <https://hunsburyhillcentre.co.uk/>, tel. 01604 702444 or contact our Events Co-ordinator Sarah Clarke at info@HunsburyHillCente.co.uk for more details

Community events:

We also cater for meetings, training events and workshops in our Low Barn or for those larger corporate events why not try our High Barn. There is free parking and wifi, access and facilities for those with mobility impairment and we can provide all refreshments and food from sandwiches to sit down meals to a hog roast. Please contact our Events Co-ordinator Sarah Clarke at info@HunsburyHillCente.co.uk for more details.



Contact Details



Who to contact for...

General Enquiries:

Northamptonshire ACRE
The Hunsbury Hill Centre
Harksome Hill
Northampton
NN4 9QX

T. 01604 765888 (switchboard)

E. acre@northantsacre.org.uk

W. www.northantsacre.org.uk/

F. <https://www.facebook.com/northantsacre/>

T. @NorthantsACRE

Village Hall Enquiries:

Frances Harris
Community Facilities Adviser
Northants ACRE

01604 825888 (direct)

01604 765888 (switchboard)

E. frances.harris@northantsacre.org.uk

W. www.northantsacre.org.uk/village-halls-critical-asset

T. [twitter@CommunityHalls](https://twitter.com/CommunityHalls)

To read Northamptonshire ACRE's Privacy Notice and Data Protection Policy, click [here](#).

The Barns at Hunsbury Hill:

Sarah Clarke
Events Co-Ordinator
The Barns at Hunsbury Hill

T. 01604 702444

E. info@HunsburyHillCentre.co.uk

W. www.HunsburyHillCentre.co.uk

F. HunsburyHillCentre

If you have something you would like to share with our readers, including whether you'd like to be one of our Spotlight sections in a future edition, please send your items to: acre@northantsacre.org.uk

All items for the next edition should be received by April 2021

Next Edition:

Summer 2021